

PLAN A-A - OUTLET STRUCTURE
SCALE: 1/4" = 1'-0"

SECTION A-A

SECTION B-B

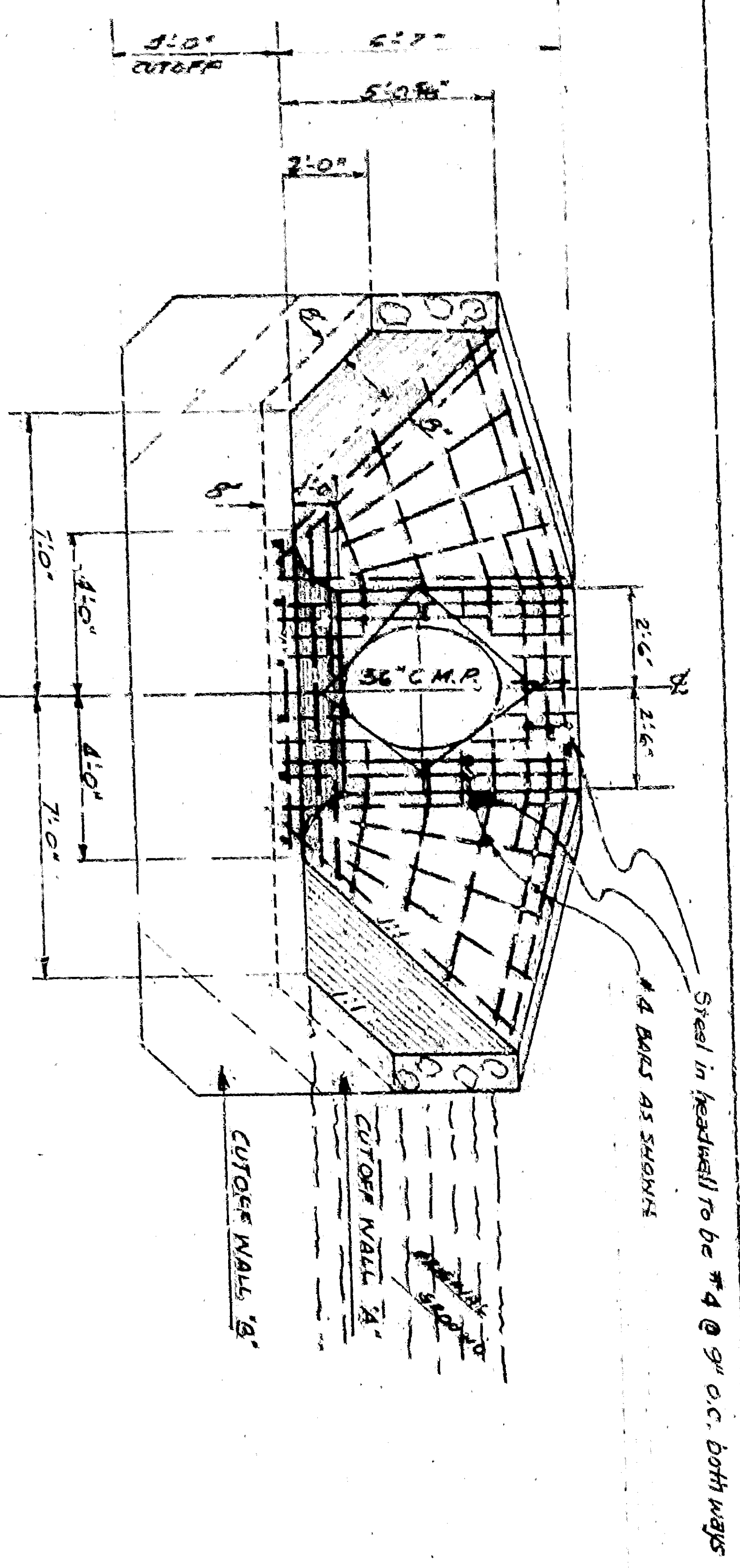
GENERAL NOTES:

CONSTRUCTION SHALL CONFORM TO THE REQUIREMENT OF THE CITY OF SAN BERNARDINO, U.S.M.N. AGREEMENT. CONCRETE: 3000 PSI. ALL DIMENSIONS: ALL LEGS 90 DEGREES. LAP ALL REIN. STEEL - 2' MIN. STAPED ALL LEGS. 3" MIN. CLEAR. REIN. SHALL BE PROTECTED BY CONCRETE. STORAGE BARRIERS DIE GREEN. REIN. SHALL BE PROTECTED BY CONCRETE. ALL REIN. SHALL BE PROTECTED BY CONCRETE. ALL REIN. SHALL BE PROTECTED BY CONCRETE. ALL REIN. SHALL BE PROTECTED BY CONCRETE.

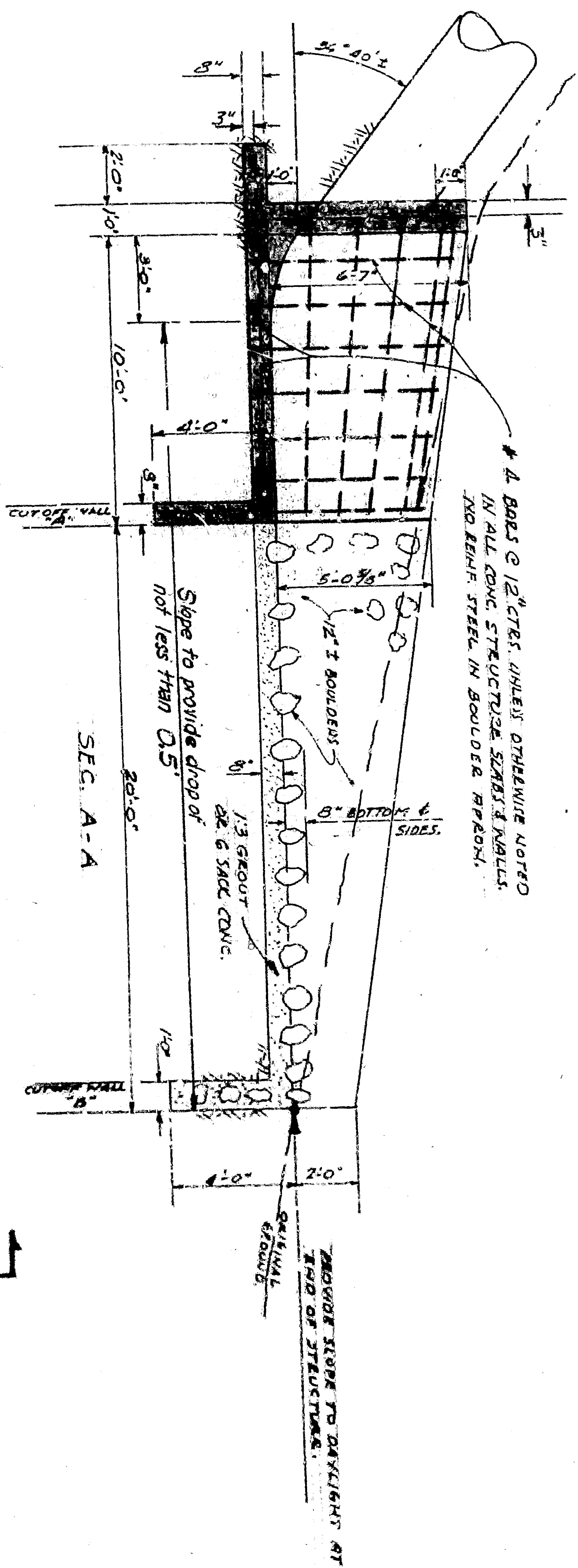
OUTLET STRUCTURE
TRACT NO. 5888
36" C.M.R. DRAIN
SEE INSTRUMENTED TRACT 6688 2ND, 3RD, 4TH, 5TH, 6TH, 7TH, 8TH, 9TH, 10TH, 11TH, 12TH, 13TH, 14TH, 15TH, 16TH, 17TH, 18TH, 19TH, 20TH, 21ST, 22ND, 23RD, 24TH, 25TH, 26TH, 27TH, 28TH, 29TH, 30TH, 31ST, 32ND, 33RD, 34TH, 35TH, 36TH, 37TH, 38TH, 39TH, 40TH, 41ST, 42ND, 43RD, 44TH, 45TH, 46TH, 47TH, 48TH, 49TH, 50TH, 51ST, 52ND, 53RD, 54TH, 55TH, 56TH, 57TH, 58TH, 59TH, 60TH, 61ST, 62ND, 63RD, 64TH, 65TH, 66TH, 67TH, 68TH, 69TH, 70TH, 71ST, 72ND, 73RD, 74TH, 75TH, 76TH, 77TH, 78TH, 79TH, 80TH, 81ST, 82ND, 83RD, 84TH, 85TH, 86TH, 87TH, 88TH, 89TH, 90TH, 91ST, 92ND, 93RD, 94TH, 95TH, 96TH, 97TH, 98TH, 99TH, 100TH, 101ST, 102ND, 103RD, 104TH, 105TH, 106TH, 107TH, 108TH, 109TH, 110TH, 111ST, 112ND, 113RD, 114TH, 115TH, 116TH, 117TH, 118TH, 119TH, 120TH, 121ST, 122ND, 123RD, 124TH, 125TH, 126TH, 127TH, 128TH, 129TH, 130TH, 131ST, 132ND, 133RD, 134TH, 135TH, 136TH, 137TH, 138TH, 139TH, 140TH, 141ST, 142ND, 143RD, 144TH, 145TH, 146TH, 147TH, 148TH, 149TH, 150TH, 151ST, 152ND, 153RD, 154TH, 155TH, 156TH, 157TH, 158TH, 159TH, 160TH, 161ST, 162ND, 163RD, 164TH, 165TH, 166TH, 167TH, 168TH, 169TH, 170TH, 171ST, 172ND, 173RD, 174TH, 175TH, 176TH, 177TH, 178TH, 179TH, 180TH, 181ST, 182ND, 183RD, 184TH, 185TH, 186TH, 187TH, 188TH, 189TH, 190TH, 191ST, 192ND, 193RD, 194TH, 195TH, 196TH, 197TH, 198TH, 199TH, 200TH, 201ST, 202ND, 203RD, 204TH, 205TH, 206TH, 207TH, 208TH, 209TH, 210TH, 211ST, 212ND, 213RD, 214TH, 215TH, 216TH, 217TH, 218TH, 219TH, 220TH, 221ST, 222ND, 223RD, 224TH, 225TH, 226TH, 227TH, 228TH, 229TH, 230TH, 231ST, 232ND, 233RD, 234TH, 235TH, 236TH, 237TH, 238TH, 239TH, 240TH, 241ST, 242ND, 243RD, 244TH, 245TH, 246TH, 247TH, 248TH, 249TH, 250TH, 251ST, 252ND, 253RD, 254TH, 255TH, 256TH, 257TH, 258TH, 259TH, 260TH, 261ST, 262ND, 263RD, 264TH, 265TH, 266TH, 267TH, 268TH, 269TH, 270TH, 271ST, 272ND, 273RD, 274TH, 275TH, 276TH, 277TH, 278TH, 279TH, 280TH, 281ST, 282ND, 283RD, 284TH, 285TH, 286TH, 287TH, 288TH, 289TH, 290TH, 291ST, 292ND, 293RD, 294TH, 295TH, 296TH, 297TH, 298TH, 299TH, 300TH, 301ST, 302ND, 303RD, 304TH, 305TH, 306TH, 307TH, 308TH, 309TH, 310TH, 311ST, 312ND, 313RD, 314TH, 315TH, 316TH, 317TH, 318TH, 319TH, 320TH, 321ST, 322ND, 323RD, 324TH, 325TH, 326TH, 327TH, 328TH, 329TH, 330TH, 331ST, 332ND, 333RD, 334TH, 335TH, 336TH, 337TH, 338TH, 339TH, 340TH, 341ST, 342ND, 343RD, 344TH, 345TH, 346TH, 347TH, 348TH, 349TH, 350TH, 351ST, 352ND, 353RD, 354TH, 355TH, 356TH, 357TH, 358TH, 359TH, 360TH, 361ST, 362ND, 363RD, 364TH, 365TH, 366TH, 367TH, 368TH, 369TH, 370TH, 371ST, 372ND, 373RD, 374TH, 375TH, 376TH, 377TH, 378TH, 379TH, 380TH, 381ST, 382ND, 383RD, 384TH, 385TH, 386TH, 387TH, 388TH, 389TH, 390TH, 391ST, 392ND, 393RD, 394TH, 395TH, 396TH, 397TH, 398TH, 399TH, 400TH, 401ST, 402ND, 403RD, 404TH, 405TH, 406TH, 407TH, 408TH, 409TH, 410TH, 411ST, 412ND, 413RD, 414TH, 415TH, 416TH, 417TH, 418TH, 419TH, 420TH, 421ST, 422ND, 423RD, 424TH, 425TH, 426TH, 427TH, 428TH, 429TH, 430TH, 431ST, 432ND, 433RD, 434TH, 435TH, 436TH, 437TH, 438TH, 439TH, 440TH, 441ST, 442ND, 443RD, 444TH, 445TH, 446TH, 447TH, 448TH, 449TH, 450TH, 451ST, 452ND, 453RD, 454TH, 455TH, 456TH, 457TH, 458TH, 459TH, 460TH, 461ST, 462ND, 463RD, 464TH, 465TH, 466TH, 467TH, 468TH, 469TH, 470TH, 471ST, 472ND, 473RD, 474TH, 475TH, 476TH, 477TH, 478TH, 479TH, 480TH, 481ST, 482ND, 483RD, 484TH, 485TH, 486TH, 487TH, 488TH, 489TH, 490TH, 491ST, 492ND, 493RD, 494TH, 495TH, 496TH, 497TH, 498TH, 499TH, 500TH, 501ST, 502ND, 503RD, 504TH, 505TH, 506TH, 507TH, 508TH, 509TH, 510TH, 511ST, 512ND, 513RD, 514TH, 515TH, 516TH, 517TH, 518TH, 519TH, 520TH, 521ST, 522ND, 523RD, 524TH, 525TH, 526TH, 527TH, 528TH, 529TH, 530TH, 531ST, 532ND, 533RD, 534TH, 535TH, 536TH, 537TH, 538TH, 539TH, 540TH, 541ST, 542ND, 543RD, 544TH, 545TH, 546TH, 547TH, 548TH, 549TH, 550TH, 551ST, 552ND, 553RD, 554TH, 555TH, 556TH, 557TH, 558TH, 559TH, 560TH, 561ST, 562ND, 563RD, 564TH, 565TH, 566TH, 567TH, 568TH, 569TH, 570TH, 571ST, 572ND, 573RD, 574TH, 575TH, 576TH, 577TH, 578TH, 579TH, 580TH, 581ST, 582ND, 583RD, 584TH, 585TH, 586TH, 587TH, 588TH, 589TH, 590TH, 591ST, 592ND, 593RD, 594TH, 595TH, 596TH, 597TH, 598TH, 599TH, 600TH, 601ST, 602ND, 603RD, 604TH, 605TH, 606TH, 607TH, 608TH, 609TH, 610TH, 611ST, 612ND, 613RD, 614TH, 615TH, 616TH, 617TH, 618TH, 619TH, 620TH, 621ST, 622ND, 623RD, 624TH, 625TH, 626TH, 627TH, 628TH, 629TH, 630TH, 631ST, 632ND, 633RD, 634TH, 635TH, 636TH, 637TH, 638TH, 639TH, 640TH, 641ST, 642ND, 643RD, 644TH, 645TH, 646TH, 647TH, 648TH, 649TH, 650TH, 651ST, 652ND, 653RD, 654TH, 655TH, 656TH, 657TH, 658TH, 659TH, 660TH, 661ST, 662ND, 663RD, 664TH, 665TH, 666TH, 667TH, 668TH, 669TH, 670TH, 671ST, 672ND, 673RD, 674TH, 675TH, 676TH, 677TH, 678TH, 679TH, 680TH, 681ST, 682ND, 683RD, 684TH, 685TH, 686TH, 687TH, 688TH, 689TH, 690TH, 691ST, 692ND, 693RD, 694TH, 695TH, 696TH, 697TH, 698TH, 699TH, 700TH, 701ST, 702ND, 703RD, 704TH, 705TH, 706TH, 707TH, 708TH, 709TH, 710TH, 711ST, 712ND, 713RD, 714TH, 715TH, 716TH, 717TH, 718TH, 719TH, 720TH, 721ST, 722ND, 723RD, 724TH, 725TH, 726TH, 727TH, 728TH, 729TH, 730TH, 731ST, 732ND, 733RD, 734TH, 735TH, 736TH, 737TH, 738TH, 739TH, 740TH, 741ST, 742ND, 743RD, 744TH, 745TH, 746TH, 747TH, 748TH, 749TH, 750TH, 751ST, 752ND, 753RD, 754TH, 755TH, 756TH, 757TH, 758TH, 759TH, 760TH, 761ST, 762ND, 763RD, 764TH, 765TH, 766TH, 767TH, 768TH, 769TH, 770TH, 771ST, 772ND, 773RD, 774TH, 775TH, 776TH, 777TH, 778TH, 779TH, 780TH, 781ST, 782ND, 783RD, 784TH, 785TH, 786TH, 787TH, 788TH, 789TH, 790TH, 791ST, 792ND, 793RD, 794TH, 795TH, 796TH, 797TH, 798TH, 799TH, 800TH, 801ST, 802ND, 803RD, 804TH, 805TH, 806TH, 807TH, 808TH, 809TH, 810TH, 811ST, 812ND, 813RD, 814TH, 815TH, 816TH, 817TH, 818TH, 819TH, 820TH, 821ST, 822ND, 823RD, 824TH, 825TH, 826TH, 827TH, 828TH, 829TH, 830TH, 831ST, 832ND, 833RD, 834TH, 835TH, 836TH, 837TH, 838TH, 839TH, 840TH, 841ST, 842ND, 843RD, 844TH, 845TH, 846TH, 847TH, 848TH, 849TH, 850TH, 851ST, 852ND, 853RD, 854TH, 855TH, 856TH, 857TH, 858TH, 859TH, 860TH, 861ST, 862ND, 863RD, 864TH, 865TH, 866TH, 867TH, 868TH, 869TH, 870TH, 871ST, 872ND, 873RD, 874TH, 875TH, 876TH, 877TH, 878TH, 879TH, 880TH, 881ST, 882ND, 883RD, 884TH, 885TH, 886TH, 887TH, 888TH, 889TH, 890TH, 891ST, 892ND, 893RD, 894TH, 895TH, 896TH, 897TH, 898TH, 899TH, 900TH, 901ST, 902ND, 903RD, 904TH, 905TH, 906TH, 907TH, 908TH, 909TH, 910TH, 911ST, 912ND, 913RD, 914TH, 915TH, 916TH, 917TH, 918TH, 919TH, 920TH, 921ST, 922ND, 923RD, 924TH, 925TH, 926TH, 927TH, 928TH, 929TH, 930TH, 931ST, 932ND, 933RD, 934TH, 935TH, 936TH, 937TH, 938TH, 939TH, 940TH, 941ST, 942ND, 943RD, 944TH, 945TH, 946TH, 947TH, 948TH, 949TH, 950TH, 951ST, 952ND, 953RD, 954TH, 955TH, 956TH, 957TH, 958TH, 959TH, 960TH, 961ST, 962ND, 963RD, 964TH, 965TH, 966TH, 967TH, 968TH, 969TH, 970TH, 971ST, 972ND, 973RD, 974TH, 975TH, 976TH, 977TH, 978TH, 979TH, 980TH, 981ST, 982ND, 983RD, 984TH, 985TH, 986TH, 987TH, 988TH, 989TH, 990TH, 991ST, 992ND, 993RD, 994TH, 995TH, 996TH, 997TH, 998TH, 999TH, 1000TH

APPROVED BY: [Signature]
CITY ENGINEER DATE: 9-12-63

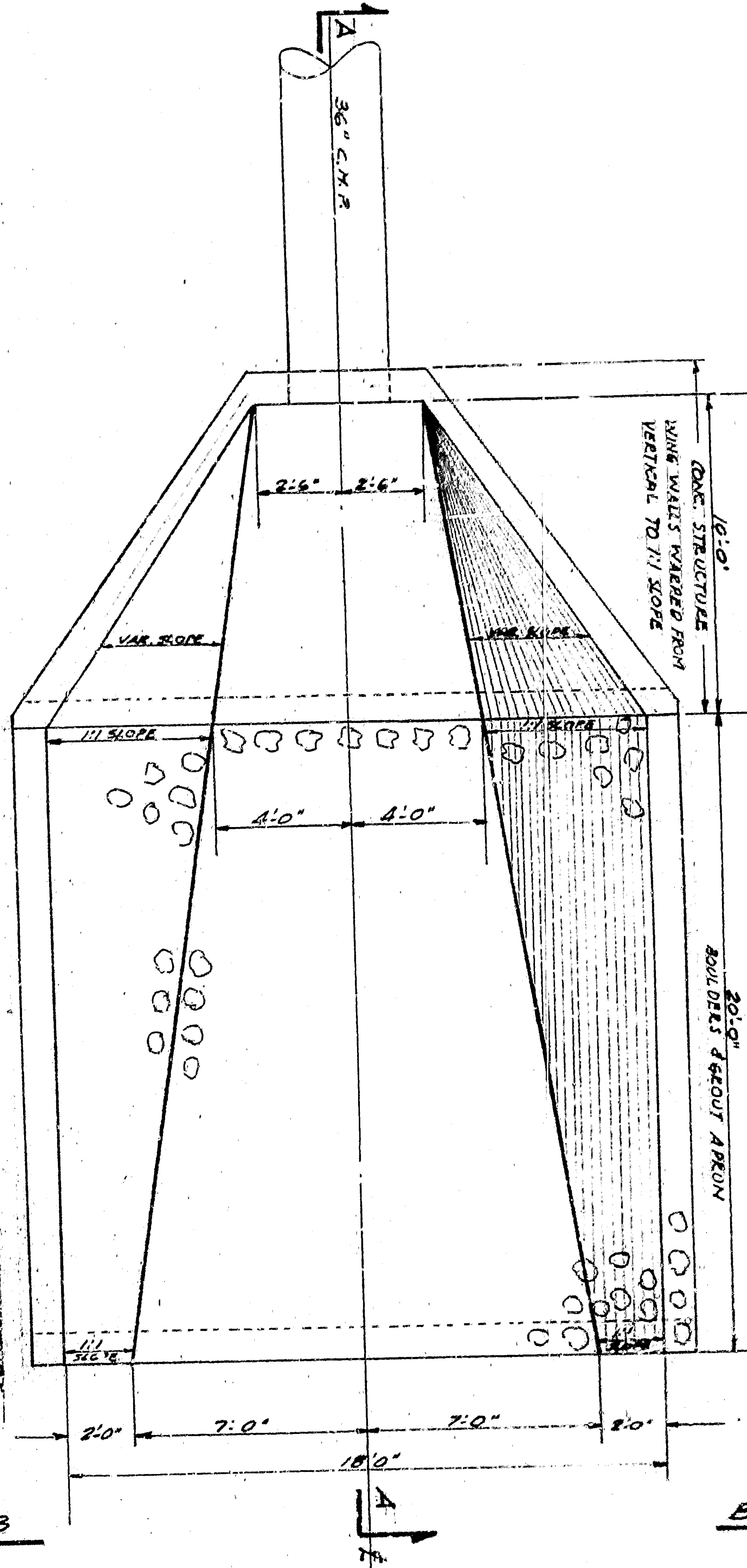
PREPARED IN THE OFFICE OF JEROME B. BOWMAN, JR.
7126 KENNEDY BL. SAN BERNARDINO, CALIF. 92404
DRAWN: 2930-A
J.B.



SEC. B-B



SEC. A-A



PLAN - QUILET STRUCTURE
SCALE: 1/4" = 1'-0"

Steel in headwall to be #4 @ 8" o.c. both ways

#4 bars as shown

CURB WALL 8"

#4 BARS @ 12" CTR. UNLESS OTHERWISE NOTED
IN ALL CONCRETE WORK. REINFORCING BARS
AND BARS SHALL BE SPOILED OFF.

1/2" 3 BARS @ 6" CTR. @ 2' 0" FROM CURB
Slope to provide depth of
not less than 0.5'

REMOVE TOP SURFACE
TO EXPOSE REINFORCING AT
TOP OF CURB WALL

GENERAL NOTES:
CONSTRUCTION SHALL CONFORM TO THE REQUIREMENT OF THE
CITY OF SAN BERNARDINO, U.S.M. AGREEMENT.
CONCRETE: 3000 PSI AT TIME OF PLACEMENT. ALL REINFORCING BARS SHALL BE
ASTM A615 TYPE 60, 3/8" MIN. DIA. UNLESS OTHERWISE NOTED.
REINFORCING BARS SHALL BE SPOILED OFF OR CORROSION RESISTANT BARS SHALL
BE USED. ALL REINFORCING BARS SHALL BE SPOILED OFF.
REINFORCING BARS SHALL BE SPOILED OFF OR CORROSION RESISTANT BARS SHALL
BE USED. ALL REINFORCING BARS SHALL BE SPOILED OFF.

S.B. COUNTY PROJECT NO. P-632-06042 AUTHORIZED
CONSTRUCTION OF THIS OUTLET STRUCTURE 36" C.M. R.
OUTLET STRUCTURE
36" C.M. R. DRAIN
TRACT NO. 6688
7266 KENNEDY BL. SAN BERNARDINO, CALIF. TEL. 333-5111
DATE: 8-14-63
SCALE: 1/4" = 1'-0"

APPROVED BY: [Signature]
CITY ENGINEER DATE: 8-14-63
PREPARED IN THE OFFICE OF JOHN E. BOWMAN, JR.
7266 KENNEDY BL. SAN BERNARDINO, CALIF. TEL. 333-5111
SCALE: 1/4" = 1'-0" DATE: 8-14-63 DRAWN: J.E.B.